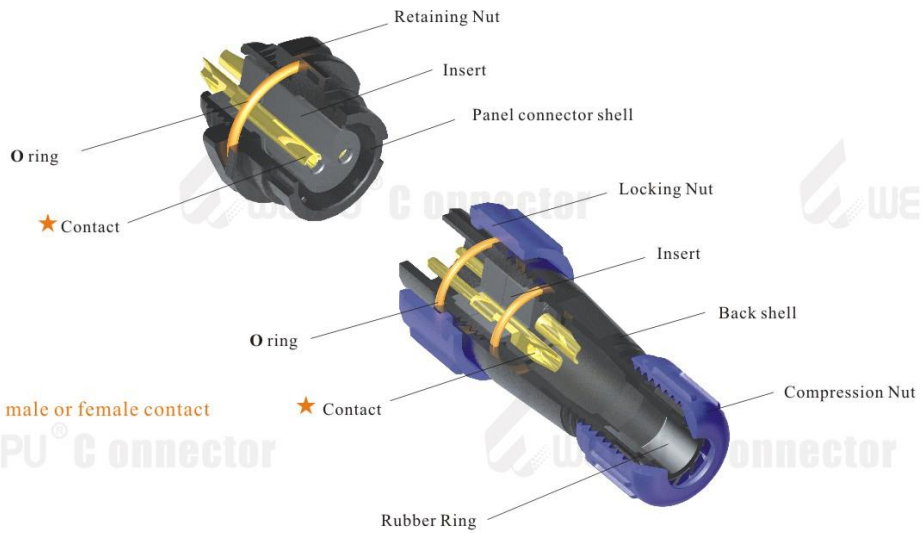




● SY13/SY17/SY21 IP67 Bayonet Coupling



Material and spec

Coupling	Bayonet
Shell material	Nylon66, fire resistance : V-0
Insert material	PPS max temperature 260 °C, fire resistance : V-0
Contact material	Brass with gold plating
Termination	SY13:solder, SY17:solder/ crimp, SY21:solder / screw / crimp
Cable outer diameter range	SY13 I: 4-6.5mm SY13 II: 5-8mm, SY17: 6-10mm, SY21 I: 4.5-7mm SY21 II: 7-12mm
IP rating	IP67
Mating cycle	>500
Temperature range	-25°C ~ +85°C
Insulation resistance MΩ	2000

**SY
17**

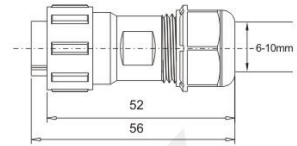
SY17 Series IP67 solder/crimp termination



SY1710/P _ _ _ _

SY1710/S _ _ _ _

Cable connector
Mate with SY1711,SY1712



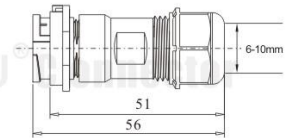
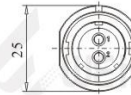
C: with cap, N: without cap
1:solder, 3:crimp
Number of contact: 2. 3. 4. 5. 7. 9. 10



SY1711/P _ _ _ _

SY1711/S _ _ _ _

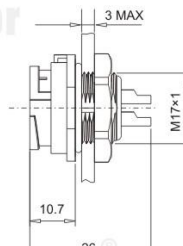
In-line cable connector
Mate with SY1710



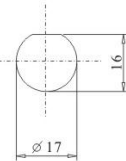
SY1712/P _ _ _ _

SY1712/S _ _ _ _

Front mount
Mate with SY1710



• Panel cutout



C: with cap, N: without cap
1:solder, 3:crimp
Number of contact: 2. 3. 4. 5. 7. 9.10

Contact arrangement and spec for solder termination

★ For crimp spec see P49-P52

Number of contact	2	3	4	5	7	9	10
Male contact face view							
Rated current (A)	10A	10A	5A	5A	5A	5A	5A
Contact diameter	∅ 1.5X2	∅ 1.5X3	∅ 1X4	∅ 1X5	∅ 1X7	∅ 1X9	∅ 1X10
Rated voltage (AC.V)	500V	500V	500V	500V	400V	400V	400V
Test voltage(AC.V) 1 min	1500V	1500V	1500V	1500V	1200V	1200V	1200V
Contact resistance mΩ	2.5	2.5	5	5	5	5	5
Wire size mm ² /AWG	≤ 2/14	≤ 2/14	≤ 0.785/18	≤ 0.785/18	≤ 0.785/18	≤ 0.785/18	≤ 0.785/18

★ Crimp contact arrangement and spec for WS,WF,WY,WP,SP,SY series

WS16、WF16、WY16 SP17、SY17	2	3	4
Male contact face view			
Rated current (A)	10A	10A	5A
Contact diameter	∅1.5X2	∅1.5X3	∅1X4
Rated voltage (AC.V)	500V	500V	500V
Test voltage(AC.V) 1 min	1500V	1500V	1500V
Contact resistance mΩ	2.5	2.5	5
Insulation resistanceMΩ	2000	2000	2000