

## Dimensions / Weight

| Wall Mount   |                                     |
|--|-------------------------------------|
| Dimensions in inches (mm)                          | Approx. Shipping Weight in Lbs (kg) |
| 23-5/8"h x 19-3/4"w x 9-1/2"d<br>(600 x 500 x 240) | 75 (34)                             |

HOW TO ORDER: GFD - 12 or 24 VDC - 220VAC - Options

Ex.: GFD - 12 - 220 - C7



# GFD Model

## Diesel Engine Fire Pump Controllers



### Standard Features

- ViZiTouch Light operator interface
- IP55 enclosure
- Pressure and event recorder
- Battery voltage and amperage display
- Run Test push button
- HAND - OFF - AUTO selector switch
- Manual crank pushbuttons (2)
- Stop pushbutton
- Remote start / deluge valve start provision
- Pressure transducer and run test solenoid valve externally mounted
- Gland plate
- Audible alarm
- Alarm contacts for remote indication
- Weekly exercise programmable time clock
- Crank cycle
- Programmable automatic shutdown (minimum run timer)
- Programmable sequential start timer (delay start timer)

### Americas

**Tornatech Inc.**  
**Head Office**  
7075, Pl. Robert-Joncas  
Suite # 132  
Montreal, Canada  
H4M 2Z2  
Tel.: + 1 514 334 0523  
+ 1 800 363 8448  
Fax: + 1 514 334 5448

**USA Sales Representatives**  
Toll Free: + 1 800 363-8448  
Cincinnati, Ohio  
Cell: + 1 513 307 6766  
Birmingham, Alabama  
Cell: + 1 205 902 9331  
**Latin America Sales Representative**  
Tel.: + 1 514 334 0523  
Cell: + 1 514 945 4067

### Europe

**Tornatech SPRL**  
32A avenue Vésale  
1300 Wavre  
Belgium  
Tel.: + 32 (0) 10 84 40 01  
Fax: + 32 (0) 10 24 75 05

### Middle East

**Tornatech FZE**  
Warehouse RA08CC04  
Jebel Ali North  
PO Box 18435  
Dubai,  
United Arab Emirates  
Tel.: + 971 (0) 4 887 0615  
Fax.: + 971 (0) 4 887 0604

### Asia

**Tornatech Pte Ltd.**  
3 Soon Lee Street #05-33  
Pioneer Junction  
Singapore  
627606  
Tel.: + 65 6795 8114  
+ 65 6795 7823  
Fax: + 65 6795 3201

• ViZiTouch Light operator interface



• Alarm bell



• Externally mounted pressure transducer and run test solenoid valve with protective cover

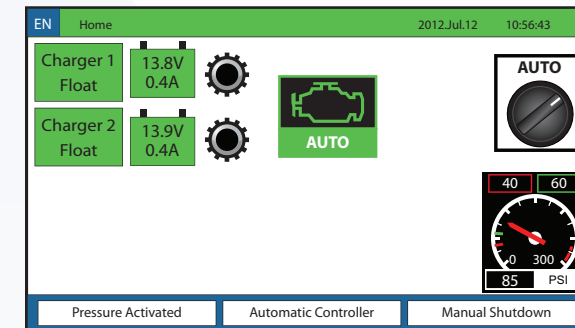


• USB Port exterior



• HAND-OFF-AUTO selector switch

**HOME**



**ViZiTouch Light operator interface**

- 4.2" color Touch screen
- Expandable storage
- Multi-language
- Upgradable software
- Password protected



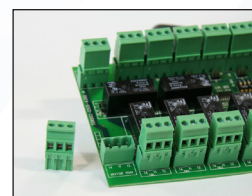
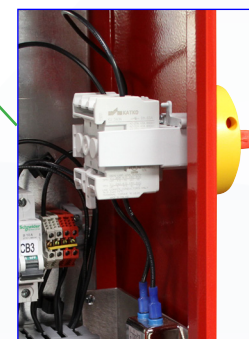
• USB Port interior



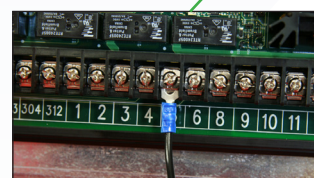
• Battery chargers



• AC Isolating switch



• Remote alarm contacts with removable terminals

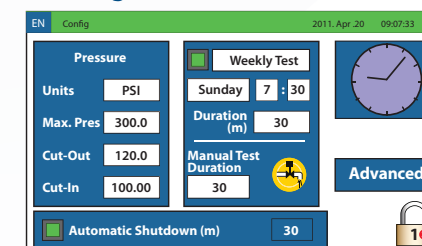


• Automotive type engine connections

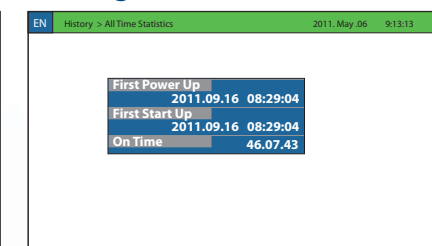


• Gland plate

**Settings**



**History/Statistics**



**Events**

| Date | Time       | Message                               |
|------|------------|---------------------------------------|
| 291  | 2011.04.14 | 16:36:34 Engine Trouble RTN           |
| 292  | 2011.04.14 | 16:36:33 Engine High Coolant Temp ACT |
| 293  | 2011.04.14 | 16:36:33 Engine Trouble ACT           |
| 294  | 2011.04.14 | 16:36:20 Engine Started 0             |
| 295  | 2011.04.14 | 16:35:29 HOA in AUTO position         |
| 296  | 2011.04.14 | 16:35:27 Engine Stopped               |
| 297  | 2011.04.14 | 16:35:03 Engine Started 0             |
| 298  | 2011.04.14 | 16:34:53 HOA in OFF/MANUAL position   |
| 299  | 2011.04.14 | 16:34:53 HOA in AUTO position         |
| 300  | 2011.04.14 | 16:34:43 HOA in OFF/MANUAL position   |

**Pressure Curves**

