

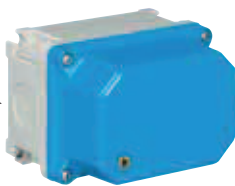


Junction **boxes**
in thermosetting (GRP)
with **low cover**
IP68



External dimensions (mm)	Box height (mm)	Cover height (mm)	Palazzoli code	Pack Q.ty
92x92	50	18	538035	1
125x92	50	18	538045	1
185x92	50	18	538055	1
125x125	75	25	538116	1
185x125	75	25	538117	1
250x125	75	25	538118	1

Characteristics: IP68 protection rating test is carried out at 4 Mtrs depth for 24 h. Blind walls.



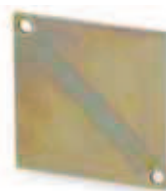
Junction **boxes**
in thermosetting (GRP)
with **high cover**
IP68



External dimensions (mm)	Box height (mm)	Cover height (mm)	Palazzoli code	Pack Q.ty
92x92	50	50	538005	1
125x92	50	50	538006	1
185x92	50	50	538015	1
125x125	75	50	538016	1
185x125	75	50	538017	1
250x125	75	50	538018	1

Characteristics: IP68 protection rating test is carried out at 4 Mtrs depth for 24 h. Blind walls.

Technical accessories:



Back plates
in galvanized steel
for TAIS boxes

For boxes with dimensions (mm)	For boxes with code	Palazzoli code	Pack Q.ty
92x92	532005, 532035, 532225, 538005, 538035, 532005, 532035	532705	1
125x92	532006, 532045, 532285, 532295, 538006, 538045, 532006, 532045	532714	1
185x92	532015, 532055, 532325, 532385, 538015, 538055, 532015, 532055	532715	1
125x125	532016, 532116, 532346, 538016, 538116, 532016EX, 532116EX	532716	1
185x125	532017, 532117, 532667, 532677, 538017, 538117, 532017EX, 532117EX, 532667EX	532717	1
250x125	532018, 532118, 532618, 532628, 532638, 532648, 538018, 538118, 532018EX, 532118EX, 532628EX	532718	1

Uses: for fixing terminal or modular devices.



Junction **boxes**
in thermosetting (GRP)
with **transparent window**
IP67

External dimensions (mm)	N. EN 50022 modules	Power dissipation (W)	Palazzoli code	Pack Q.ty
125x125x125	4	13	532516	1
185x125x125	6,5	15	532557	1
250x125x125	9	20	532658	1

Characteristics: blind walls with drilling template. Padlockable window and with tamper-proof screw.

Technical accessories:

