



# moujen

## ► MJ SERIES PRECISION OIL-TIGHT LIMIT SWITCHES

### ◆ FEATURES/功能

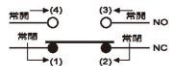
- Wide choice of heads and actuators. / 可配合各種不同之連桿及頭
- Variety of operating characteristics. / 具多種使用特性曲線
- Captive cover screws. / 接線頭具帽式覆蓋螺絲
- Dustproof, Oil-Tight, Water-Resistant. / 防塵、防油、防水
- Stainless steel essentials. / 不鏽鋼主零件
- Standard size & dimensions, 1/2" conduit entry. / 規格及尺寸標準化
- Temperature range +15°F to +175°F (-10°C to +80°C). / 適用溫度
- PF 1/2"

All oil-tight limit switches are 2 circuits limit switches. 1 NO and 1 NC circuits  
The 1 NO and 1 NC contact arrangement is double break isolated.  
所有密封式限制開關都是雙迴路限制開關，1NO (常開) 與 1NC (常閉) 迴路，  
各迴路接點與兩段式絕緣。

### ◆ RATING/額定

10A	125 or 300V AC(resistive)
0.8A	125 V DC (resistive)
0.4A	250 V DC
1/2HP	125 V AC
1HP	250 V AC

### ◆ CIRCUITRY/電氣回路



### ◆ CHARACTERISTICS/特性

Operating speed	1mm to 2m/sec
Operating frequency	Mechanically: 120 operations/min. Electrically: 30 operations/min.
Contact resistance	15m Ω max. (initial)
Insulation resistance	100M Ω min. (at 500 VDC)
Dielectric strength	1,000 VAC, 50/60 Hz for 1 minute between non-continuous terminals 2,200 VAC, 50/60 Hz for 1 minute between each terminal and non-current-carrying metal part and between each terminal and ground
Vibration	Malfunction durability: 10 to 55Hz 1.5mm double amplitude
Shock	Mechanical durability: Approx. 1,000m/sec <sup>2</sup> (approx. 100G's) Malfunction durability: Approx. 300m/sec <sup>2</sup> (approx. 30 G's)
Ambient operating temperature	Operating: -10°C to + 80°C
Humidity	95% RH max
Service life	Mechanically: 15,000,000 operations min Electrically:(2.5A,110VAC)MAX 500,000 operations min.
Degree of protection	IEC 529 class IP65 (Sealed accessories requirement)

### ◆ ORDER GUIDE

- Standard type ~ 2 screws: 標準型~兩個螺絲孔蓋

MJ-7101	MJ-7102	MJ-7102R	MJ-7103	MJ-7104	MJ-7106	MJ-7126	MJ-3241	MJ-3242	MJ-3243
MJ-3244	MJ-7107	MJ-7107L	MJ-7108	MJ-7204	MJ-7207	MJ-7207L	MJ-7208	MJ-7000	

- NEW SWITCHES 2017 : 2017年新型開關

MJ-7301	MJ-7302	MJ-7302R	MJ-7303	MJ-7304	MJ-7306	MJ-7326	MJ-3341	MJ-3342
MJ-3343	MJ-3344	MJ-7307	MJ-7307L	MJ-7308	MJ-7404	MJ-7407	MJ-7407L	
MJ-7408	MJ-7001N							

- Plastic roller type (Custom made): 塑膠滾輪 (訂製品)

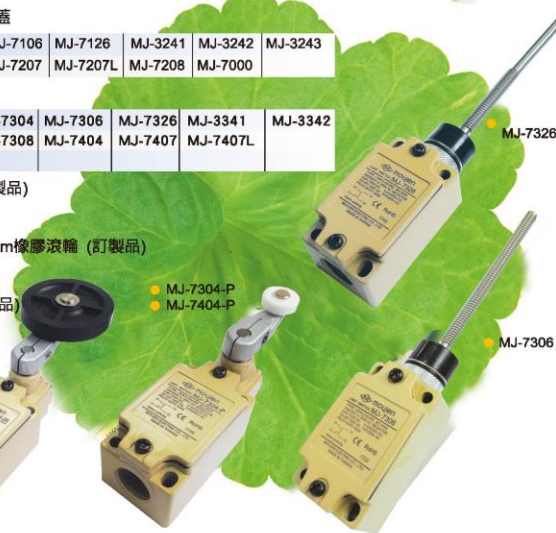
MJ-7104-P	MJ-7204-P	MJ-7108-P	MJ-7208-P
-----------	-----------	-----------	-----------

- Ø50mm rubber's roller type (Custom made): 50mm橡膠滾輪 (訂製品)

MJ-7104-26	MJ-7204-26	MJ-7108-26	MJ-7208-26
------------	------------	------------	------------

- Metal roller type (Custom made): 金屬滾輪 (訂製品)

MJ-3241-M	MJ-3242-M	MJ-3243-M	MJ-3244-M
-----------	-----------	-----------	-----------

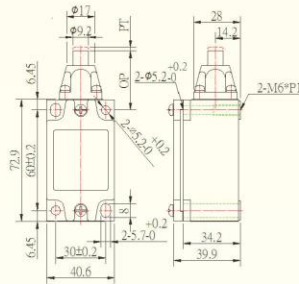


RoHS

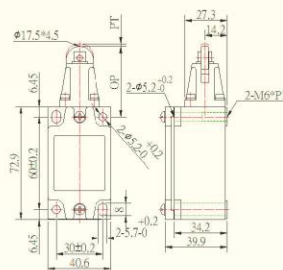


# ORDER GUIDE

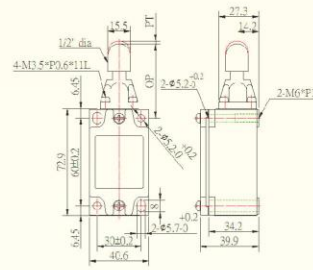
● MJ-7301



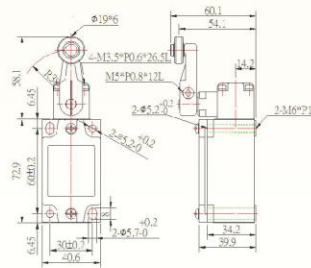
● MJ-7302



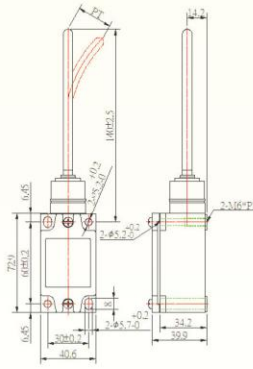
● MJ-7303



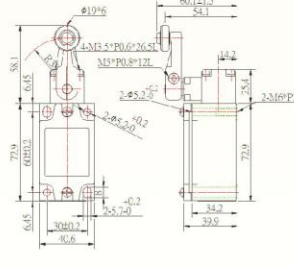
● MJ-7304



● MJ-7306



● MJ-7404



## OPERATING CHARACTERISTICS

	MJ-7101
OF MAX	2800g
RF MIN	900g
PT MAX	2mm —.070 in.
OT MIN	5.5mm —.200 in. Max.
DT MAX	1.0 mm —.040 in.
OP	34 ± 0.8

	MJ-7102
OF MAX	2800g
RF MIN	900g
PT MAX	2mm —.070 in.
OT MIN	5.5mm —.200 in. Max.
DT MAX	1.0 mm —.040 in.
OP	44 ± 0.8

	MJ-7103
OF MAX	2800g
RF MIN	900g
PT MAX	2mm —.070 in.
OT MIN	4mm —.157 in. Max.
DT MAX	1.0 mm —.040 in.
OP	44.5 ± 0.8

	MJ-7104
OF MAX	1400g
RF MIN	227g
PT MAX	15° to 20°
OT MIN	Min, 25°
DT MAX	Max, 12°
	TF: Max 2720g-4 in lbs.
	TT: Min. 43°

	MJ-7106
OF MAX	150g
RF MIN	-
PT MAX	30°
OT MIN	
DT MAX	

	MJ-7204
OF MAX	900g
RF MIN	50g
PT MAX	25° to 30°
OT MIN	60°
DT MAX	16°
	TT: 90° + 10°



# moujen

## ► MJ SERIES PRECISION OIL-TIGHT LIMIT SWITCHES

### ◆ FEATURES/功能

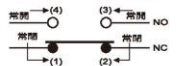
- Wide choice of heads and actuators. / 可配合各種不同之連桿及頭
- Variety of operating characteristics. / 具多種使用特性曲線
- Captive cover screws. / 接線頭具帽式覆蓋螺絲
- Dustproof, Oil-Tight, Water-Resistant. / 防塵、防油、防水
- Stainless steel essentials. / 不鏽鋼主零件
- Standard size & dimensions, 1/2" conduit entry. / 規格及尺寸標準化
- Temperature range +15°F to +175°F (-10°C to +80°C). / 適用溫度
- PF 1/2"

All oil-tight limit switches are 2 circuits limit switches. 1 NO and 1 NC circuits  
The 1 NO and 1 NC contact arrangement is double break isolated.  
所有密封式限制開關都是雙迴路限制開關，1NO (常開) 與 1NC (常閉) 迴路，  
各迴路接點與兩段式絕緣。

### ◆ RATING/額定

10A	125 or 300V AC(resistive)
0.8A	125 V DC (resistive)
0.4A	250 V DC
1/2HP	125 V AC
1HP	250 V AC

### ◆ CIRCUITRY/電氣回路



● MJ-7104

PF 1/2"

### ◆ CHARACTERISTICS/特性

Operating speed	1mm to 2m/sec
Operating frequency	Mechanically: 120 operations/min. Electrically: 30 operations/min.
Contact resistance	15m Ω max. (initial)
Insulation resistance	100M Ω min. (at 500 VDC)
Dielectric strength	1,000 VAC, 50/60 Hz for 1 minute between non-continuous terminals 2,200 VAC, 50/60 Hz for 1 minute between each terminal and non-current-carrying metal part and between each terminal and ground
Vibration	Malfunction durability: 10 to 55Hz 1.5mm double amplitude
Shock	Mechanical durability: Approx. 1,000m/sec <sup>2</sup> (approx. 100G's) Malfunction durability: Approx. 300m/sec <sup>2</sup> (approx. 30 G's)
Ambient operating temperature	Operating: -10°C to + 80°C
Humidity	95% RH max
Service life	Mechanically: 15,000,000 operations min Electrically:(2.5A,110VAC)MAX 500,000 operations min.
Degree of protection	IEC 529 class IP65 (Sealed accessories requirement)



● MJ-7302R



● MJ-7302



● MJ-7303



● MJ-7304  
● MJ-7404

### ◆ ORDER GUIDE

- Standard type ~ 2 screws: 標準型~兩個螺絲孔蓋

MJ-7101	MJ-7102	MJ-7102R	MJ-7103	MJ-7104	MJ-7106	MJ-7126	MJ-3241	MJ-3242	MJ-3243
MJ-3244	MJ-7107	MJ-7107L	MJ-7108	MJ-7204	MJ-7207	MJ-7207L	MJ-7208	MJ-7000	

- NEW SWITCHES 2017 : 2017年新型開關

MJ-7301	MJ-7302	MJ-7302R	MJ-7303	MJ-7304	MJ-7306	MJ-7326	MJ-3341	MJ-3342
MJ-3343	MJ-3344	MJ-7307	MJ-7307L	MJ-7308	MJ-7404	MJ-7407	MJ-7407L	
MJ-7408	MJ-7001N							

- Plastic roller type (Custom made): 塑膠滾輪 (訂製品)

MJ-7104-P	MJ-7204-P	MJ-7108-P	MJ-7208-P
-----------	-----------	-----------	-----------

- Ø50mm rubber's roller type (Custom made): 50mm橡膠滾輪 (訂製品)

MJ-7104-26	MJ-7204-26	MJ-7108-26	MJ-7208-26
------------	------------	------------	------------

- Metal roller type (Custom made): 金屬滾輪 (訂製品)

MJ-3241-M	MJ-3242-M	MJ-3243-M	MJ-3244-M
-----------	-----------	-----------	-----------



● MJ-7301



● MJ-7304-P  
● MJ-7404-P



● MJ-7306



● MJ-7326



## ▶ MJ SERIES PRECISION OIL-TIGHT LIMIT SWITCHES

### ◆ OVERTRAVEL TYPE

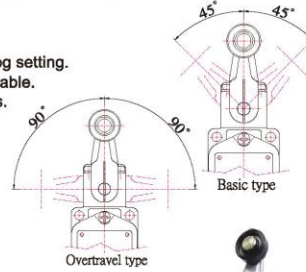
The Overtravel Type is a limit switch which is provided with a greater OT to facilitate dog setting. Since this type is identical to the Basic Type in dimension, both types are interchangeable. The Overtravel Type is classified into two versions - 71 \ -73 series and - 72 \ -74 series.

#### -71 \ -73 SERIES

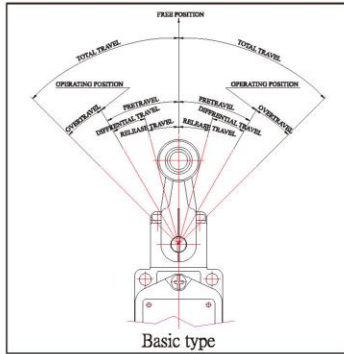
The head of -71 \ -73 series switch can be installed in any of the four directions: 45° operation on either side - possible

#### -72 \ -74 SERIES

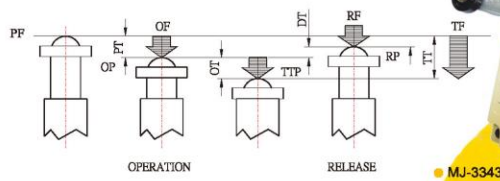
The head of -72 \ -74 series switch can be installed only in two directions, forward and backward: 90° operation on either side - possible



### ◆ ROTARY ACTUATION



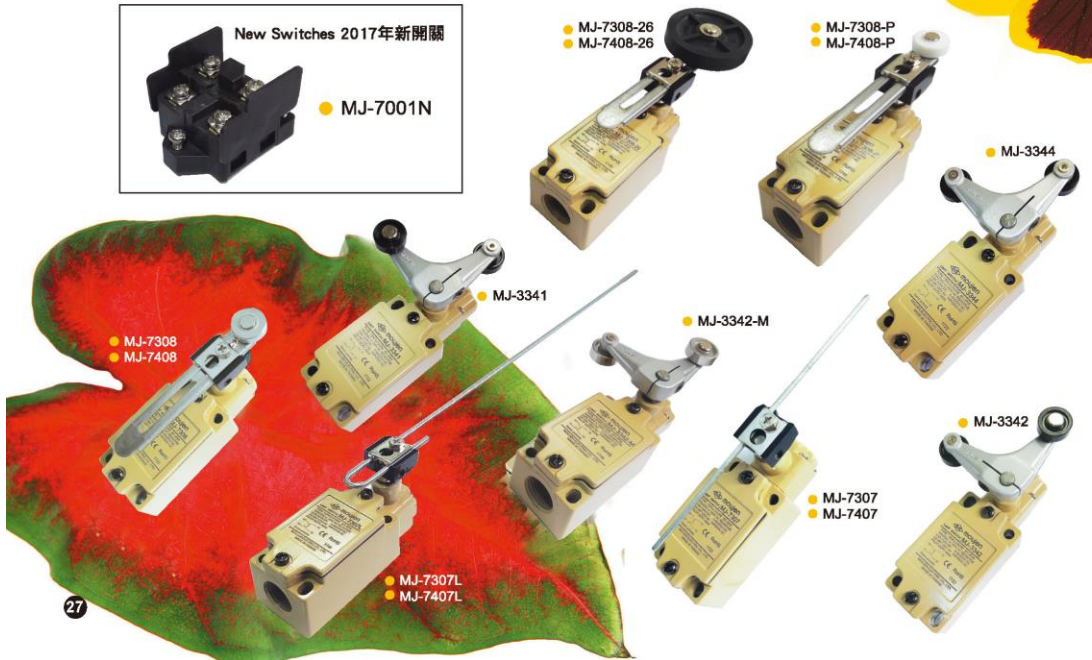
### ◆ IN-LINE PLUNGER ACTUATION



Characteristics: OF-Operating Force; PT-Pretravel; OT-Over Travel; DT-Differential Travel  
RF-Release Force; OP-Operation Position; TF-Travel Force; RP-Release Position; TT-Total Travel

### ◆ REMARK

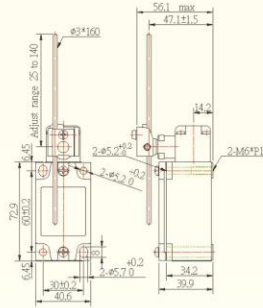
- MJ-7107L, MJ-7207L → 407mm long stick: 407mm 長柄



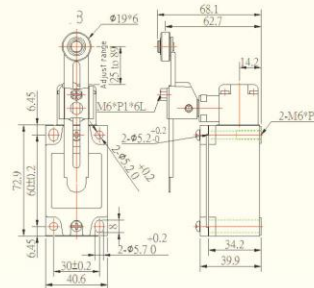
# ORDER GUIDE

## DIMENSIONS (mm)

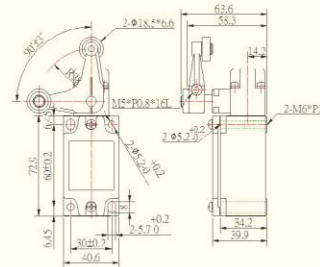
- MJ-7107
- MJ-7307



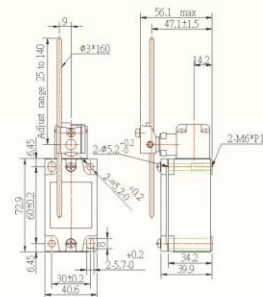
- MJ-7108
- MJ-7308



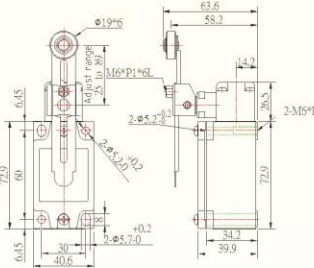
- MJ-3241
- MJ-3341



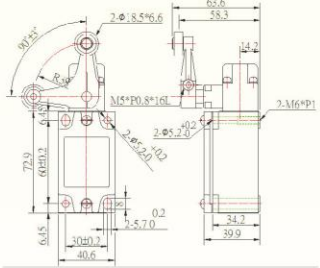
- MJ-7207
- MJ-7407



- MJ-7208
- MJ-7408



- MJ-3242
- MJ-3342



## OPERATING CHARACTERISTICS

	MJ-7107
OF MAX	245g
RF MIN	28g
PT MAX	15° to 20°
OT MIN	30°
DT MAX	12°
	TF: Max. 200g-1/2 In lb. TT: Min 43°

	MJ-7108
OF MAX	1400g
RF MIN	227g
PT MAX	15° to 20°
OT MIN	25°
DT MAX	12°
	TF: Max. 2720g-4 In lbs. TT: Min 43°

	MJ-3241
OF MAX	1200g
RF MIN	—
PT MAX	55°
OT MIN	35°
DT MAX	—

	MJ-7207
OF MAX	150g
RF MIN	25g
PT MAX	25° to 30°
OT MIN	60°
DT MAX	16°
	TF: Max. 200g-1/2 In lb. TT: 90° + 10°

	MJ-7208
OF MAX	900g
RF MIN	50g
PT MAX	25° to 30°
OT MIN	60°
DT MAX	16°
	TF: Max. 1820g-4 In lbs. TT: 90° + 10°