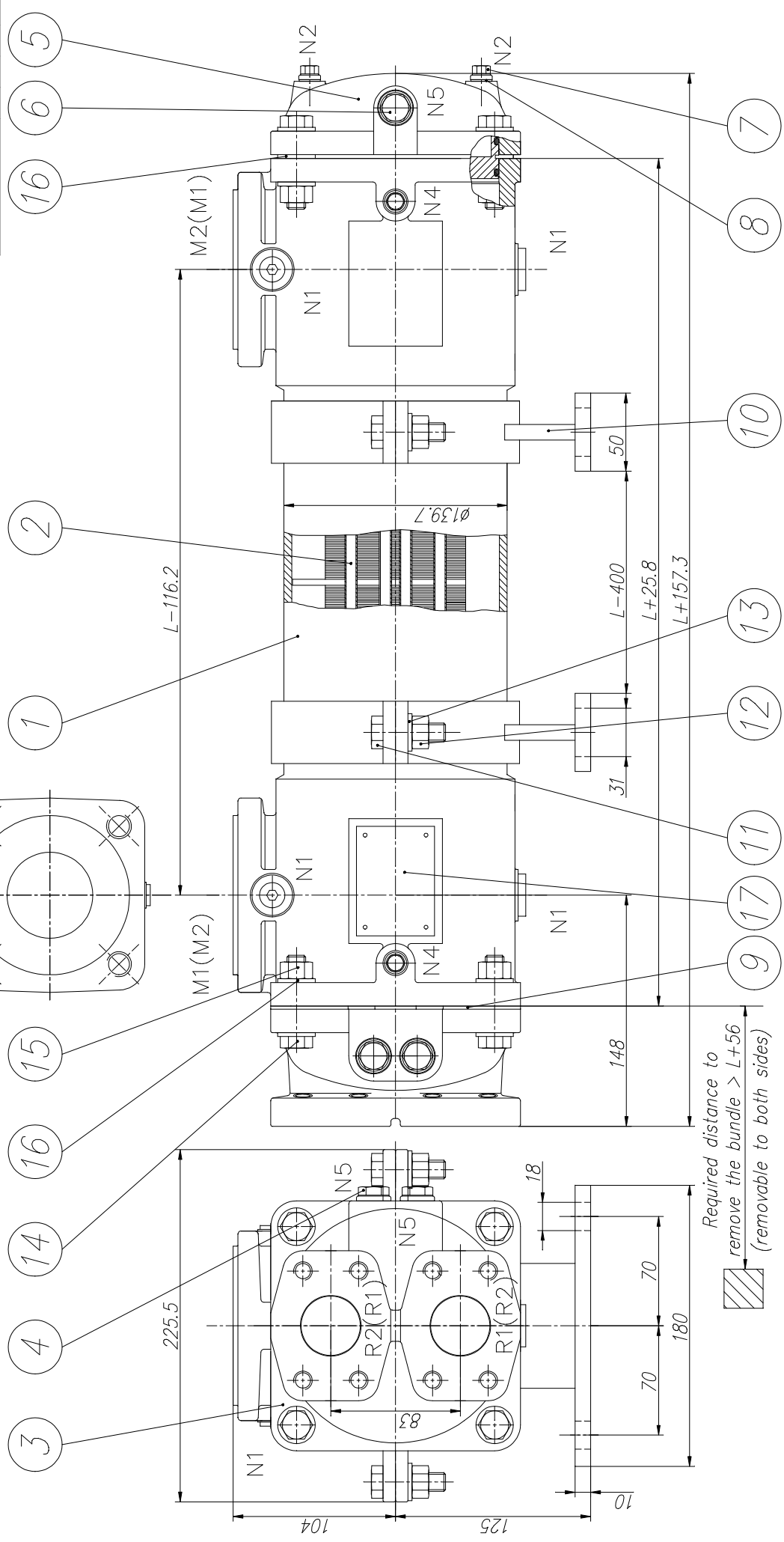


Primer:
2-Component-Epoxy Resin
Dry Film Thickness 40-60µm

Pressure range	Shellside Y	Shellside X	Tube side
max. operating pressure [bar]	16	25	10
test pressure [bar]	24	37,5	15
max. operating temperature [°C]	150	100	100

approved pressures and temperatures for ABS/BV/DNV/GLRS/RS/RINA/TÜV:

Pressure range	Shellside Y	Shellside X	Tube side
max. operating pressure [bar]	16	25	10
test pressure [bar]	24	37,5	15
max. operating temperature [°C]	150	100	100



Required distance to
remove the bundle > L+56
(removable to both sides)

GENERAL TOLERANCE	SURFACE QUALITY	SCALE: 1:2.5	(WEIGHT:)
ISO 2768-m	DIN ISO 1302	(MATERIAL:)	Format: A3
ISO 13920-CF	DATE	Heat exchanger	
	DRAW/ 01.12.99	L400 to L3600	
	CHECK/ 21.02.00	KS12-B##-#21	
	NAME	AutoCAD LT 2009	
	Garbe	FILE: KS12-B##-#21.dwg	
	Graulrich	SHEET: 1	
		1 Sh.	

THIS DRAWING AND ALL THE DATA CONTAINED HEREIN IS THE EXCLUSIVE PROPERTY OF HS-COOLER GMBH AND MAY NOT BE DISCLOSED TO OTHERS WITHOUT WRITTEN CONSENT.	DATE	NAME	DATE	NAME
E Test pressure, N5, Norm	13.06.16	AH		
D Bracket material thickness	18.12.09	BS		
C Corr. long hole-bracket	22.09.09	BS		
B Test Pressure	01.01.04	Gar		
A Pressure Y	01.02.02	Gar		
SYM	REV	RECORD	DATE	NAME

Pressure range	Shellside X	Shellside Y	Tube side	Tube side
Max. operating pressure PS [bar]	-1/16	-1/30	-1/10	-1/10
Test pressure, PT [bar]	22,88	42,9	14,3	14,3
Max. operating temperature, TS [°C]	-10/130	-10/100	-10/100	-10/100
Content [dm³] (L[m],L[T][mm])	Lx(10-2,74/LT)+0,5		2,85xL+1,1	
Joint (1=IN/2=OUT)	M1/M2=DN50 (PN40)		R1/R2=SAE 1 1/2" (PN16)	
Vent/Drain	EN 1092-1 Type B raised face		ISO 6162-1	
(DIN ISO 228-1 BSPP)	N1=6x G1/2"		N2=2x G1/8"	
Anodes	N4=4x G1/8"		N5=3x G3/8"	