

KVE

Solenoid Actuated Spool Valves

Manifold and Sub-base Mounted

3/2, 5/2



Features

- ◆ High endurance spool valves
- ◆ Media - compressed air and neutral gases
- ◆ Dry or lubricated operation
- ◆ Mounting via separate sub-base or manifold

Materials

Body: Zinc alloy
 Spool: Aluminium
 Seals: Irradiated Polyethylene

Technical Specifications

Function: 3/2, 5/2
 Port connections: Via separate sub-base
 Thread G1/8
 Push-in fitting Ø6mm
 Via Manifold
 Main pressure range: - 1 bar min + 8 bar max
 Lubrication: Dry or lubricated
 Filtration: 40µm
 Temperature range: - 10°C min + 50°C max
 Voltage options: DC 12, 24V
 AC 110, 230V 50/60Hz
 Power consumption: DC 3.8W, AC 5.3VA
 Additional information: See tables
 Air return and air reset versions available

Part Number	Port connection	Function	Actuation	
			'I'	'O'
KVE11143	*	3/2	Solenoid	Spring
KVE11145	*	5/2	Solenoid	Spring
KVE11345	*	5/2	Solenoid	Solenoid

* Valve mounting and port connections are facilitated by use of either a sub-base or manifold.

There are two types of sub-bases to choose from - side or bottom entry.

Sub-bases should be used to mount individual valves.

Manifolds should be used when more than one valve is to be connected.

Manifolds have common air supply and exhaust galleries.

Sub-base selection table

Valve Type	Sub-base		Part Number
	Port connection position & type	Side thread G1/8	
KVE11143		KBS43X	KB436C
KVE11145		KBS45X	KB456C
KVE11345		KBS45XY	KB456C
Optional sub-base to suit Ø4mm tubing available			
Refer to sub-base/manifold information in this section			

Part Number	Pilot pressure bar		Response time milliseconds max @ 5.5 bar		Flow nl/s (dm ³ /s @ Δp 5.5 bar)	Cv	Kv	Effective Ø mm
	min	max	'I'	'O'				
KVE11143	3	8	14	30	7.0	0.26	3.8	3.2
KVE11145	3	8	14	30	7.0	0.26	3.8	3.2
KVE11345	2	8	14	14	7.0	0.26	3.8	3.2

Ordering Information:

By Valve Part Number + Voltage

All valves are supplied with coil(s) and standard electrical connection socket(s)

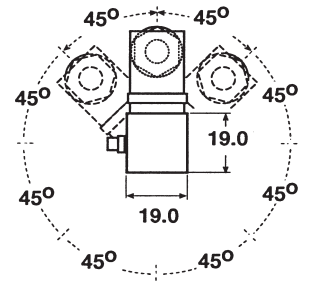
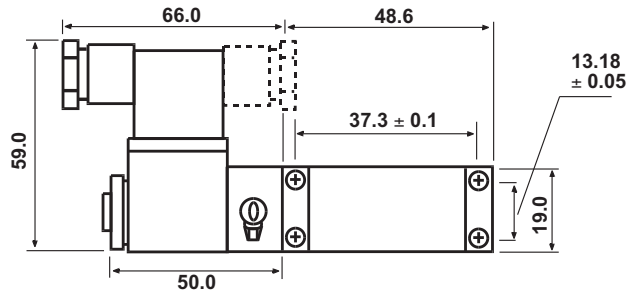
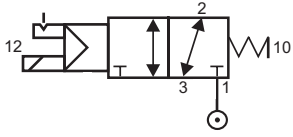


Dimensions

units mm

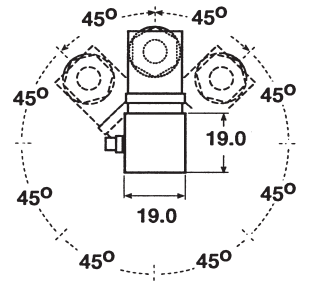
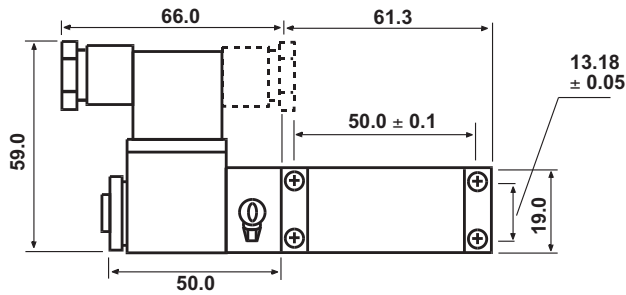
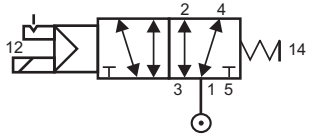
3/2 Single Solenoid Valves

KVE11143



5/2 Single Solenoid Valves

KVE11145



5/2 Double Solenoid Valves

KVE11345

