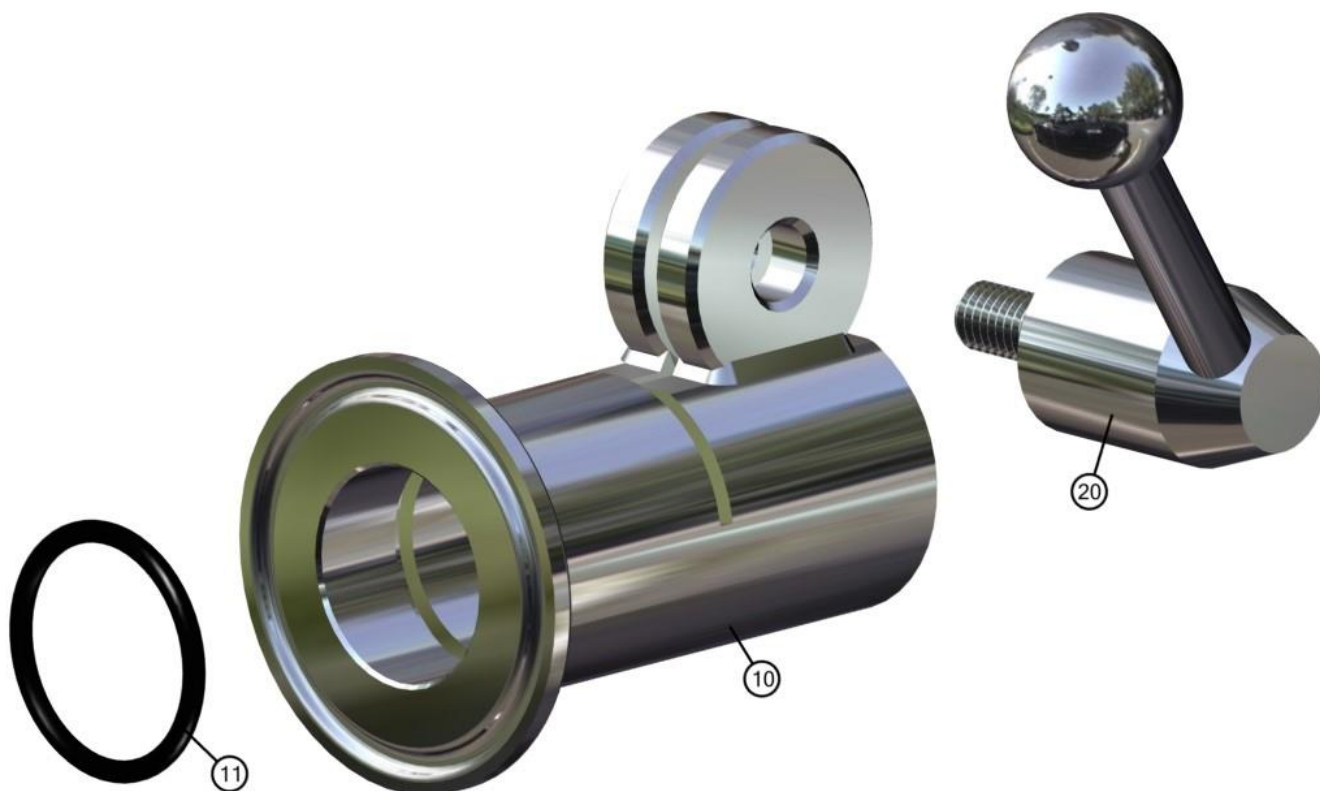




SCHLICK Clamping Sleeve for Shaft-Ø 25.0 mm
(D9.315-50,5-Ø25)

Register

3-D-View	Page 1
Recommended Accessories	Page 3
Components-Drawing and Spare Parts List	Page 4
Assembly Instructions	Page 5
Drawing	Page 6



ID	Quantity	Name	Item-Number
10	1	Clamping Sleeve	xxxxx
11	1	O-Ring for Clamping Sleeve	54064
20	1	Clamping Lever	61035

Item-Number of the Complete Clamping Sleeve: 54057

SCHLICK-Clamping Sleeve compl. Version 1.0, D 9.315-50,5-Ø25

Fixing Clamp Ø 50,5 mm, for Shaft Ø 25,0 mm

with Clamping Lever

O-Ring EPDM/FDA

1.4404/1.4571

Assembly Instructions for SCHLICK Clamping Sleeve for Shaft-Ø 25.0 mm (D9.315-50,5-Ø25 Version 1.0)

Disassembly:

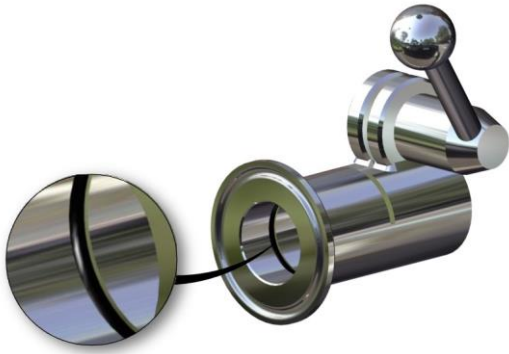
CAUTION! If the nozzle shows any external pollution, it has to be cleaned unconditional before disassembly.
(Recommendation: Use an Ultrasonic-Cleaner)

Figures in squared brackets represent the parts number of the detail drawing on page 4.

All threads are right-handed threads!

1. Fix the clamping-sleeve [10] with the clamp ferrule by using a suitable seal on the vessel.
2. Insert the nozzle with pipe-diameter 25.0 mm into the clamping-sleeve [10].
3. Tighten clamping-lever [20] well by hand, the nozzle is now fastened.

Check the O-Ring [11] inside the clamping sleeve [10] regularly for damages and replace it, if necessary.



Use only suitable tools!

Do not clean the clamping sleeve with any hard objects, use only plastic spatula, cleaning solvents, cleaning rags, ultrasonic cleaner, etc.

Before assembly, all threads and all O-Rings have to be greased slightly with a suitable lubricant.

Suitable lubricants are available at SCHLICK! Ask for our advice.

