

# PER1 · 2 Series

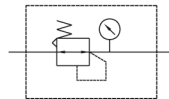
## Precision Regulator

New  
Additional  
Size

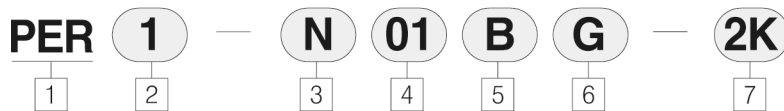


- Highly accurate pressure regulation
- Start-up stability
- Flow stability
- Automatic high downstream relief capacity
- Temperature stability

### Symbol



## How to order



1 Precision pressure regulator

2 Body size  
1 : PER 1 (1/8)  
2 : PER 2 (1/4)

3 Thread  
Blank : Rc(PT)  
N : NPT  
G : G(PF)

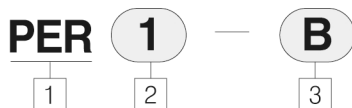
4 Port size  
01 : 1/8(PER1)  
02 : 1/4(PER2)

5 Bracket  
Blank : No bracket  
B : Bracket

6 Pressure gauge  
Blank : No gauge  
G : Pressure gauge

7 Set pressure range  
2K : 0.005~0.2 Mpa  
4K : 0.01~0.4 Mpa  
8K : 0.01~0.8 Mpa

## How to order bracket

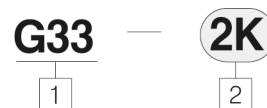


1 Precision pressure regulator

2 Body size  
1 : PER 1 (1/8)  
2 : PER 2 (1/4)

3 Bracket

## How to order pressure gauge



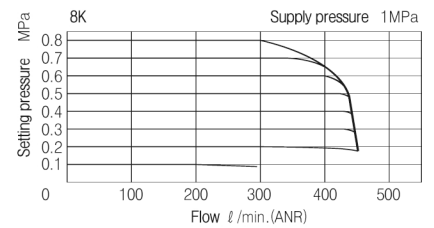
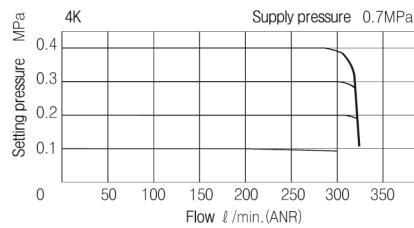
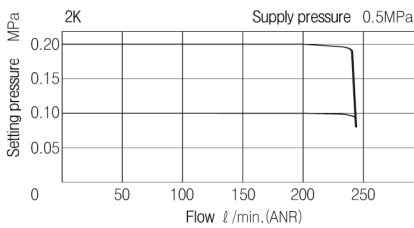
1 Diameter size  
G33 : Ø33  
G42 : Ø42

2 Set pressure range  
2K : 0.005~0.2MPa  
4K : 0.01~0.4MPa  
8K : 0.01~0.8MPa

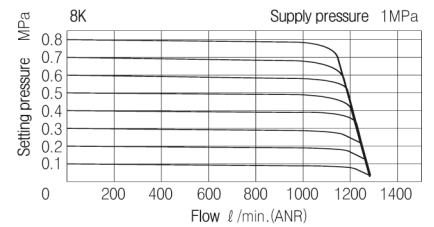
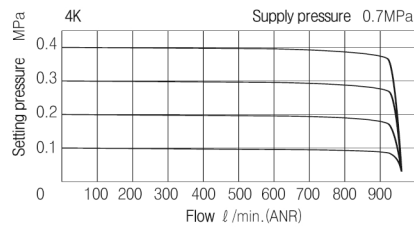
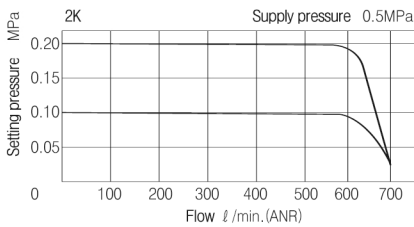
## Standard specifications

Series	PER 1	PER 2
Port size	1/8	1/4
Fluid	Air	Air
Max. operating pressure	1 MPa	1 MPa
Proof pressure	1.5 MPa	1.5 MPa
Output pressure range	2K : 0.005~0.2 MPa	2K : 0.005~0.2 MPa
	4K : 0.01~0.4 MPa	4K : 0.01~0.4 MPa
	8K : 0.01~0.8 MPa	8K : 0.01~0.8 MPa
Sensitive	Within(E) 0.2% of full span	Within 0.2% of full span
Repeatability	Within(E) $\pm 0.5\%$ of full span	Within $\pm 0.5\%$ of full span
Ambient and fluid temperature	-5~+60°C (No freezing)	-5~+60°C (No freezing)
How to mount	Bracket	Bracket
Option	Bracket, Pressure gauge (G33)	Bracket, Pressure gauge (G42)
Weight	150g	300g

## Flow characteristic PER1



## Flow characteristic PER2



## Dimension PER1 · 2

