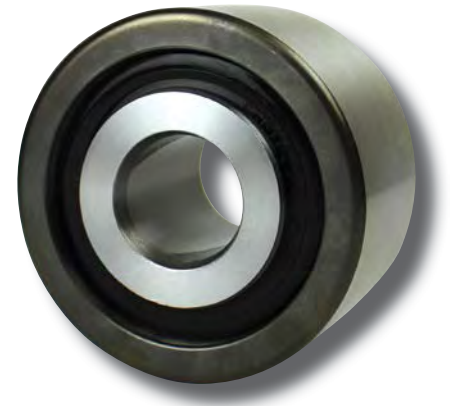
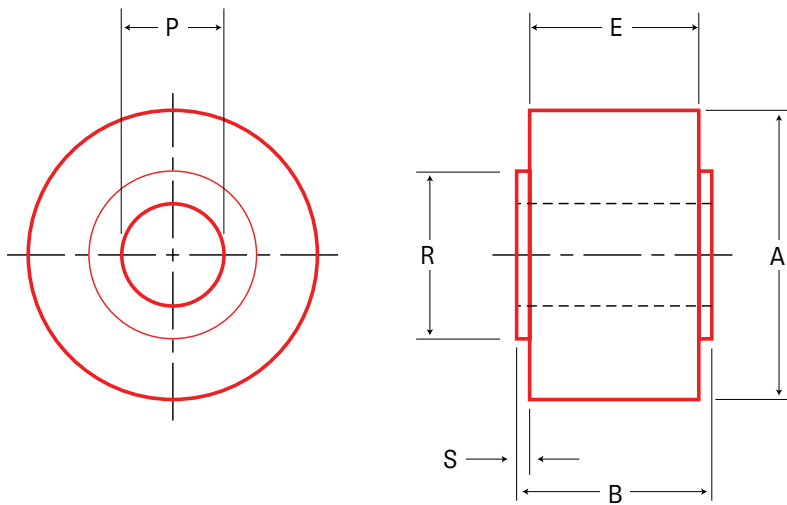


# LOAD RUNNERS

## Plain - Yoke Style - Metric Sizes (mm)



Part No.	Item No.	A		B	E	P		R	S	Ball or Tapered Roller Bearings	Bearing Capacity Radial Load (N)			Bearing Capacity, Static Thrust (N)	Approx Weight (kg)	
		Roller Dia				Tread Width	Bore				3000 hrs L10 life @ 100 RPM	500 hrs L10 life @ 33 1/3 RPM	Static Limit			
		+0.00	-0.02				+0.00									-0.02
<b>HPCA-40</b>	90271	40	23	22	10	22	0.5	BB	3140	8220	3460	2140	0.14			
<b>HPCA-50</b>	90272	50	33	32	15	28	0.5	BB	5780	15140	8070	4980	0.32			
<b>HPCA-62</b>	97297	62	40	38	20	32	1	TRB	20330	48390	33900	20300	0.91			
<b>HPCA-62-2</b>	90273	62	40	38	20	32	1	BB	9490	24880	11240	6940	0.91			
<b>HPCA-76</b>	96105	76	46	44	25	44.5	1	TRB	26670	63480	88960	53380	1.24			
<b>HPCA-80</b>	96107	80	46	44	25	44.5	1	TRB	26670	63480	88960	53380	1.41			
<b>HPCA-85</b>	96108	85	46	44	25	44.5	1	TRB	26670	63480	88960	53380	1.6			
<b>HPCA-90</b>	96109	90	56	54	30	57.2	1	TRB	32870	78240	120990	58270	1.92			
<b>HPCA-100</b>	96110	100	56	54	30	57.2	1	TRB	32870	78240	120990	58270	2.93			
<b>HPCA-125</b>	96111	125	71	68	45	82.6	1.5	TRB	62210	148070	230860	144570	5.01			
<b>HPCA-150</b>	96112	150	73	70	55	88.9	1.5	TRB	66990	159430	250880	147240	8.65			
<b>HPCA-200</b>	96114	200	79	76	70	108	1.5	TRB	79300	188740	354970	215290	19.58			
<b>HPCA-250</b>	96116	250	79	76	70	108	1.5	TRB	79300	188740	354970	215290	35.74			

For heavy duty shafts, see page 43  
 Other sizes available upon request  
 Refer to INSTALLATION NOTES on pages 87-89  
 LOAD CAPACITIES ARE BASED ON UNIFORM AND STEADY LOADING.  
 1 kg = 9,81 N = 2,21 lbs